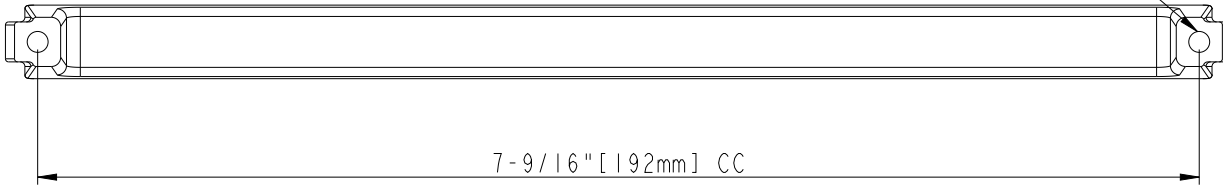
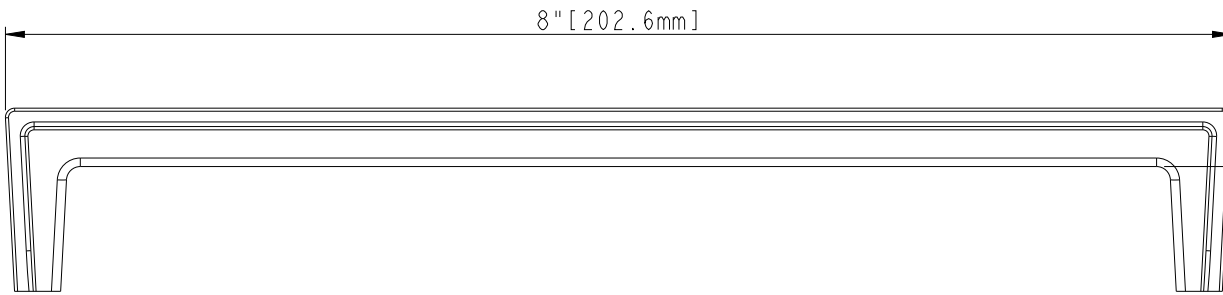


8-32 UNC -  $\nabla$  8mm



7-9/16" [192mm] CC



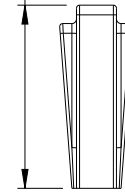
8" [202.6mm]

13/16" [20.6mm]

7-1/4" [184.4mm]

5/16" [7.6mm]

1-3/16" [30.3mm]



5/16" [8.1mm]



1/2" [12.2mm]

ACCESSORY:  
SCREW: 8-32x1" 2PCS  
BREAK AWAY SCREW: 8-32x45 2PCS  
ALL SCREW MATERIAL: STEEL-SAE1006